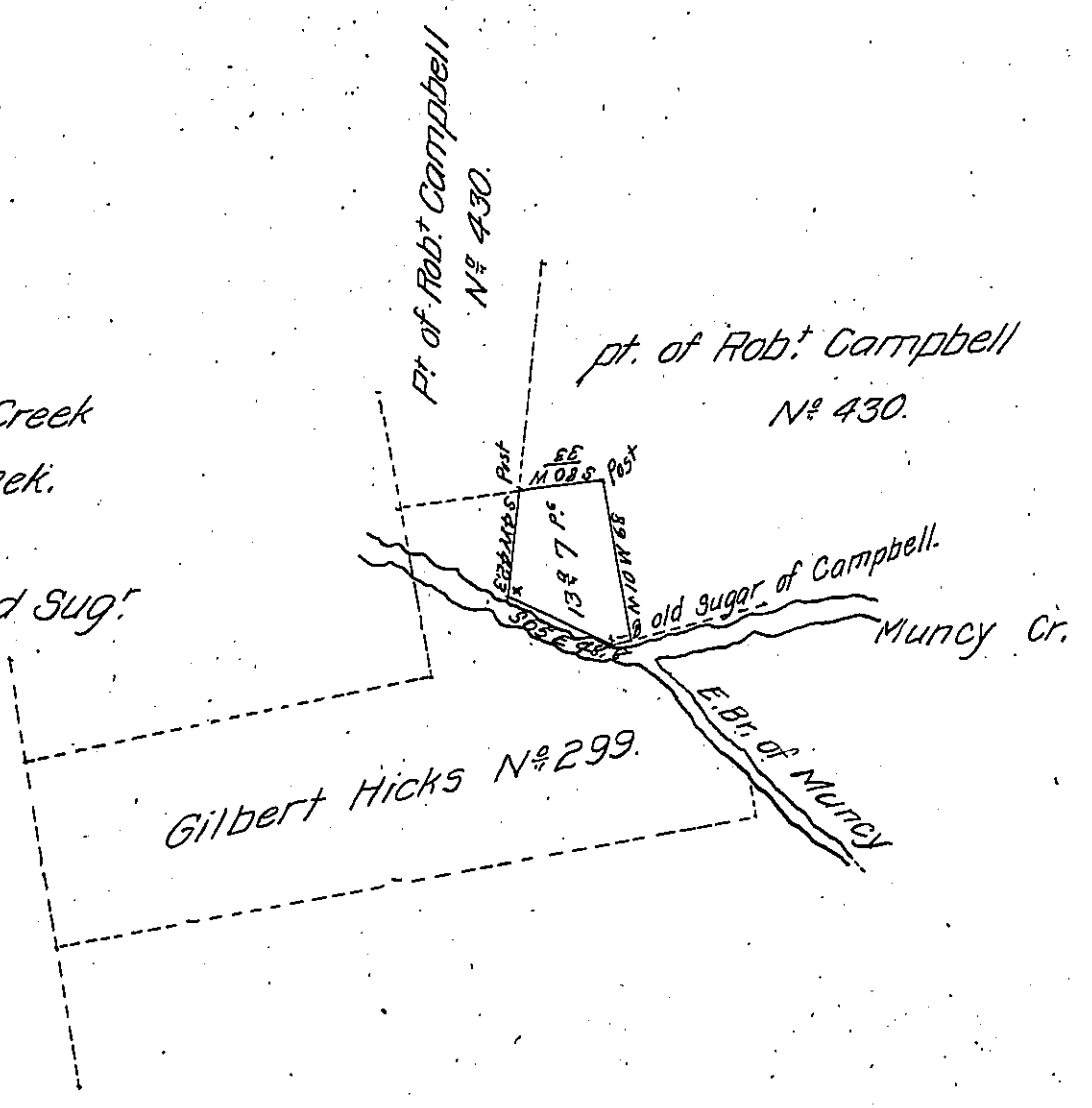


FORM No. 1.

Courses & Dist.
 of the part in the
 Black lines
 Beg- at old Sug.^r
 N 10 W 68 Post
 S 80 W 33 Post
 S 4 W 42.3 in Creek
 then up the Creek.
 S 65 E 48.8
 N. 62 E. 3.3 to old Sug.^r



Situate in Muncy Creek Township Lycoming County on the West Side of Muncy
 Creek Surveyed 14th April 1845 for Patenting that part of the above tract included
 in black lines. Containing thirteen acres and Seven perches with allowance of Six per
 Centum - being part of tract Surveyed to Gilbert Hicks on Application N° 299
 dated 3^d April 1769.

To Jacob Sallade Esquire
 Surveyor General.

Alexander H. McHenry D.S.

IN TESTIMONY that the above is a copy of the original remaining on file in
 the Department of Internal Affairs of Pennsylvania, made
 conformably to an Act of Assembly approved the 16th day of
 February 1833, I have hereunto set my hand and caused
 the Seal of said Department to be affixed at Harrisburg,
 this Twentieth day of April 1907

Leach B. Brown
 Secretary of Internal Affairs.